

Your source for professional conference & event planning

Meetingnews

NORTHWEST

Do Business in Nature

Easy access and a wide variety of outstanding venues await just outside of Seattle

Online at meetingnewsnw.com FEBRUARY / MARCH 2018



MEET HERE North Central Washington
Stunning scenery, excellent facilities and a friendly welcome attract meetings and events to the sunny side of the Cascades. **Page 30>**

FEATURE Retreat Centers

Providing a serene setting without distractions, retreat centers can be the ideal choice for a productive meeting or a special event. **Page 20>**



+ Navigating Your Contract

Expert contract tips from one of the region's leading wedding and events industry attorneys. **Page 18>**

MEET HERE

North Central Washington

By Tamara Muldoon

Mid-way between Seattle and Spokane, on the sunnier side of the Cascade Mountains, north central Washington offers a variety of meeting venues and a robust local food and beverage scene, along with welcoming small-town vibes. In addition to Wenatchee, the region's largest city, outstanding event facilities are found in the Bavarian village of Leavenworth, scenic Lake Chelan valley and the western-themed town of Winthrop. Along this easternmost stretch of the Cascade Loop Scenic Highway, grand vistas greet you at every turn and recreation options abound in close proximity.



Campbell's Resort on Lake Chelan

Chelan

Visitors come to Chelan for its scenery, recreation and wineries; qualities that also make it a delightful meeting destination.

MEET AND STAY

What began as the 16-room Chelan Hotel in 1901, has been lovingly nurtured into the 8-acre Campbell's Resort by five generations of the Campbell family who still operate the property today. With 170 guest rooms and 14,000 square feet of meeting space, Campbell's is the area's premier full-service conference center.

This lakefront resort offers a private beach, swimming pools, hot tubs and day spa. Accommodations range from spacious, well-equipped hotel rooms to family suites—all with fabulous lake views. Although Chelan's many restaurants are just blocks away, guests often venture no further than Campbell's Pub & Veranda, open morning to night serving the best of local cuisine and beverages.

OUT AND ABOUT

One hour north of Wenatchee, Chelan resides at the foot of fjord-like, 50-mile-long Lake Chelan. Water sports such as boating, swimming, water skiing, kayaking and paddle boarding are popular pursuits. Other activities include hiking, mountain biking, fishing and golf.

Looking for a thrill? How about parasailing above Lake Chelan or soaring along one of the fastest zip line courses in North America? For a more relaxing option, take the Lady of Lake excursion for an unforgettable scenic cruise, or visit some of the nearly 30 nearby wineries.



Lake Chelan

CONNECT

WENATCHEE

- Wenatchee has approximately 1,400 sleeping rooms
- Pangborn Airport in East Wenatchee is 15 minutes away

Wenatchee Valley Chamber of Commerce

Jerri Barkley, marketing/communications coordinator
509-662-2116
jerri@wenatchee.org
wenatchee.org

Wenatchee Convention Center

- More than 28,000 square feet of meeting and event space
- 18 meeting rooms
- 1,200 seated capacity in largest room

Linda Herald, general manager
509-662-4411
linda@wenatcheeconventioncenter.com
wenatcheeconventioncenter.com

Coast Wenatchee Center Hotel

- 147 guest rooms
- 2,500 square feet of meeting and event space
- 4 meeting rooms
- 70 seated capacity in largest room

Ron Warren, director of sales
509-662-1234
rwarren@wenatcheeconventioncenter.com
coasthotels.com

Red Lion Hotel Wenatchee

- 149 guest rooms
- 9,000 square feet of meeting and event space
- 7 meeting rooms
- 550 seated capacity in largest room

Marianne Rumbolz, group sales manager
509-664-4532
marianne.rumbolz@redlion.com
redlion.com/wenatchee

Confluence Technology Center

- 9,000 square feet of meeting and event space
- 10 meeting rooms
- 180 seated capacity in largest room

Tricia Degnan, conference center coordinator
509-661-3118
tricia@ccpd.com
ncwctc.com

BPOE Ballroom

- 6,000 square feet of meeting and event space
- 1 meeting room
- 400 seated capacity in largest room

Leanna Kurpuis
509-860-3254
bpoegrandballroom@gmail.com
bpoegrandballroom.com

Town Toyota Events Center

- 3,660 square feet of meeting space
- 4,200-seat sport and event arena
- 3 meeting rooms
- 100 seated capacity in largest meeting room

Aaron Harvey, asst. general manager, booking/box Office
509-888-7341
aharvey@towntoyotacenter.com
towntoyotacenter.com

Chateau Fair le Pont

- 2,000 square feet of meeting and event space
- 2 meeting rooms
- 150 seated capacity in largest room

Debe' Brazil
509-667-9463
debebrazil@nwi.net
fairelepoint.com

Wells House

- 525 square feet of meeting and event space
- 2 meeting rooms
- 50 seated capacity in largest room

Dawn Collings, Wells House coordinator
509-888-0619
dcollings@wvmcc.org
wentacheevalleymuseum.org/wells-house

Pybus Market

- 2,750 square feet of meeting and event space
- 1 meeting room
- 200 seated capacity in largest room

Steve Robinson, executive director
509-679-7143
steve.robinson@pybusmarket.org
pybusmarket.org

Ohme Gardens

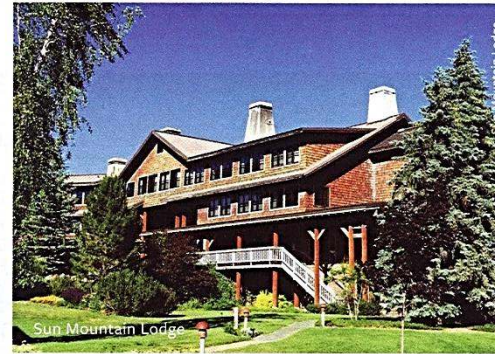
Mike Short, garden administrator
509-662-5785
info@ohmegardens.com
ohmegardens.com

LEAVENWORTH

- Leavenworth has approximately 2,700 sleeping rooms
- Pangborn Airport in East Wenatchee is 45 minutes away

Leavenworth Chamber of Commerce

Jessica Stoller, media director
509-548-5807
media@leavenworth.org
leavenworth.org



Sleeping Lady Resort

- 58 guest rooms
- 10,000 square feet of meeting and event space
- Nine meeting rooms
- 190 seated capacity in largest room

Michael Molohon, senior group sales manager
509-888-9880
mmolohon@sleepinglady.com
sleepinglady.com

Icicle Village Resort

- 112 guest rooms and 30 Condos with 1 to 3 bedrooms
- 9,200 square feet of meeting and event space
- Eight meeting rooms
- 250 seated capacity in largest room

Nick Sowle, group sales manager
855-888-2272 ext. 429
nick@iciclevillage.com
iciclevillageresort.com

Leavenworth Festhalle

- 10,000 square feet of meeting and event space
- One meeting room
- 1,000 seated capacity

Josh Flickner, manager
509-548-5275
festhalle@cityofleavenworth.com
leavenworthfesthalle.com

CHELAN

- Chelan has approximately 1,100 sleeping rooms
- Pangborn Airport in East Wenatchee is 60 minutes away

Lake Chelan Chamber of Commerce

Olivia Plew, director of marketing
509-682-3503
olivia@lakechelan.com
lakechelan.com

Campbell's Resort

- 170 guest rooms
- 14,000 square feet of meeting and event space
- 12 meeting rooms
- 400 seated capacity in largest room

Mary Amsden, group sales director
509-888-7095
mary@campbellsresort.com
campbellsresort.com

WINTHROP

- Winthrop has more than 250 sleeping rooms
- Pangborn Airport in East Wenatchee is 2 hours away

Winthrop Chamber of Commerce

509-996-2125
info@winthropwashington.com
winthropwashington.com

Sun Mountain Lodge

- 112 guest rooms
- 10,000 square feet of meeting and event space
- 7 meeting rooms
- 300 seated capacity in largest room

LenElla Tabor, director of sales & conference services
509-996-4770
ltabor@sunmountainlodge.com
sunmountainlodge.com

